

EASYMODULAR MULTI-GEM

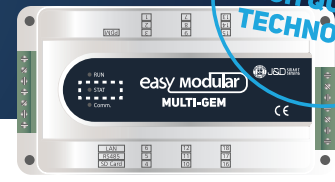
CHARACTERISTICS

- Multi power meter(EasyModular Multi-GEM) is able to measure and monitor multi electric power loads.
- Max 54 single phase or 26ch 3P3W or 18ch 3P4W feeders power monitoring
- Measurement : V (L-N, L-L) , A, Hz, PF, Unbalance, Power(P,Q,S), Energy (P,Q,S).
- 1.0/0.5 Class accuracy for power measurement conformed by IEC62053-21/IEC62053-22.
- Flexible application for the single phase/ 3phase 4wire/ 3phase 3wire power line.
- Sag / Swell / Over Current / Temp. Alarm.
- Total Harmonics Distortion (THD)
- 1 analog input terminal for temperature measurement (NTC)
- Support RS232 / RS485 Serial (Modbus RTU) and Ethernet (Modbus TCP) Comm.

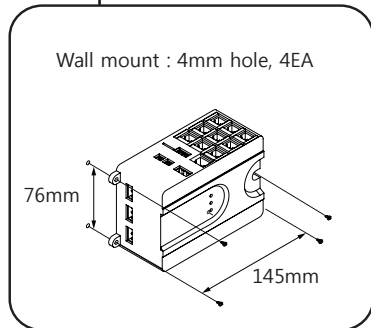
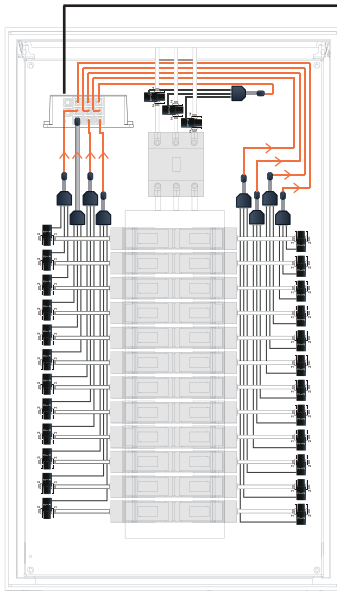
SPECIFICATIONS

Model		EasyModular Multi-GEM (18/27/36/45/54)
Power system		1P2W, 3P3W(2CT), 3P4W
Power Input		AC/DC 100-240V
Measuring Inputs Rating	Voltage	Voltage: Up to 690VAC (L-L) Current: 50-600A/ch, Max. 3,000A/ch
	Frequency	45-65Hz
	CT type	100 mA / 333mV
	Digital Input	1point, AC 220 V external input power
	NCT	25 °C, 10 kΩ,(β(25/85)=3970°k
Digital Output		1Point (250VAC/5A, 30VDC/5A resistive)
Communication		RS485 RS232 Ethernet
Usage		Indoor use
Altitude up to		2000 m
Operating Temperature		-10 °C to 55 °C
Humidity		30-85% R.H. (non-condensation)
Over voltage category		II for AC Mains CAT III for Measurement Terminals
Pollution degree		2
Short-term temporary		overvoltage: 1440 V for AC Mains
Long-term temporary		overvoltage: 490 V for AC mains
Storage Temp.		-25 °C to 70 °C
Standards		IEC 62053-21/22

BRANCH CIRCUIT POWER METER

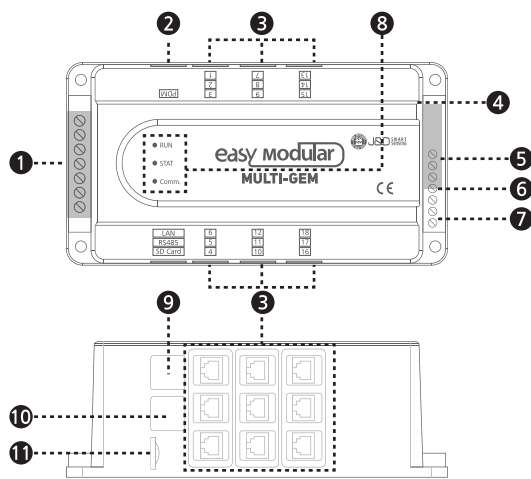


INSTALLATION



Item	Condition
Location	Indoor
Operation temp,	-10 °C to 55 °C [14 °F to 122 °F]
Storage temp,	-25 °C to 70 °C [-13 °F to 158 °F]
Operation humidity	Non condensation, 5 % R.H. to 95 % R.H.

NAME OF PARTS

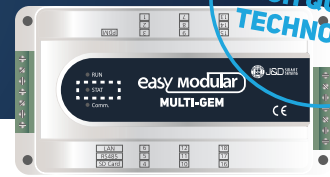


CT Pin No.	Description
1,3,5(K cable)	K side of CT
2,4,6(L cable)	L side of CT

No.	Name	Description
1	Voltage Measurement	Power input terminal for measurement
2	Ethernet Port	Upper system connection port
3	1~54 CT Port	CT connector
4	Temp. sensor	NTC temperature sensor connector
5	DO Terminal	DO output terminal
6	DI Terminal	DI input terminal: Connect the power for operation of the device (AC / DC 100 ~ 240V)
7	Operating power	Connect power for operation of the unit (AC / DC 100 ~ 240V)
8	Device Status LED	RUN: Flashes during normal operation STAT: Fast flashing during normal measurement Comm: Flashing during normal communication
9	PDM terminal	Port for connecting device to PC / PDM
10	RS485 terminal	External I / O connection, upper system connection (Modbus Master / Slave)
11	SD Card slot	Micro SD card slot

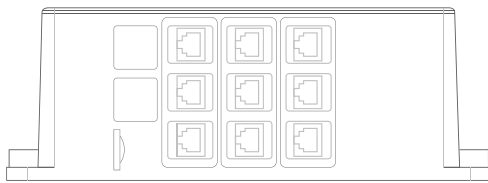
BRANCH CIRCUIT POWER METER

NEW
HIGH QUALITY
TECHNOLOGY

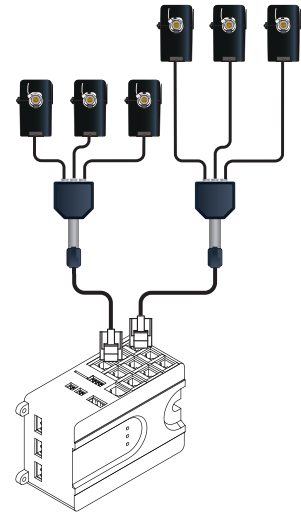
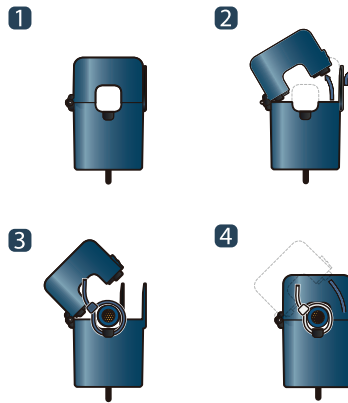


INSTALLATION

◆ Example of CT wiring

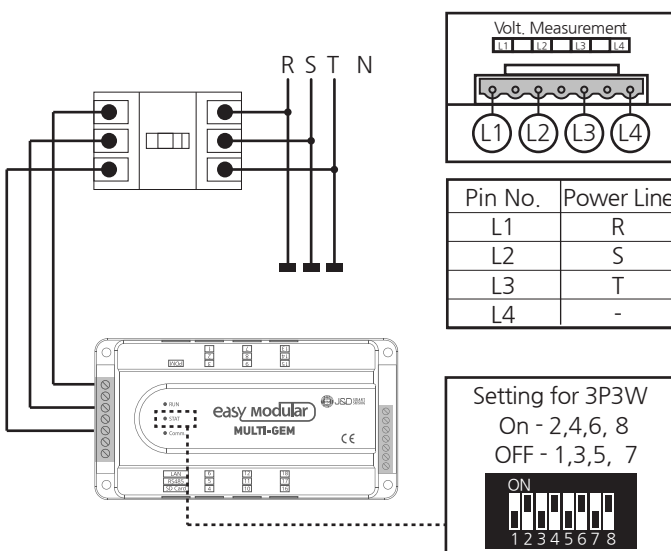


How to use >>>

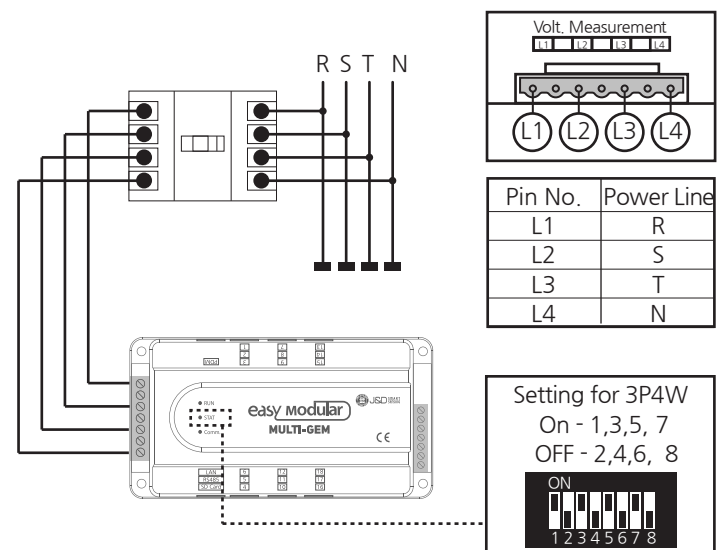


VOLTAGE INPUT TERMINAL

◆ Wiring of 3Phase 3Wire system



◆ Wiring of 3Phase 4Wire system



There is a switch on the back of the product