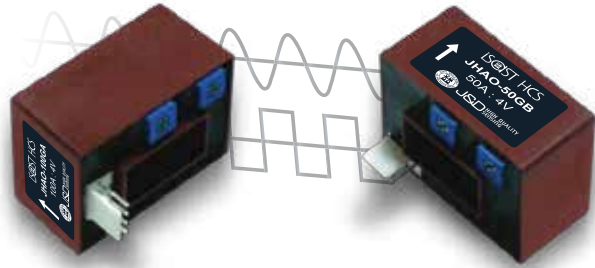


# OPEN-LOOP CURRENT SENSORS JHAO-XXXG(A/B) SERIES



## >>> Features

- Panel mounting
- Industrial temperature range
- UL94-V0 compliance
- CE and RoHS available

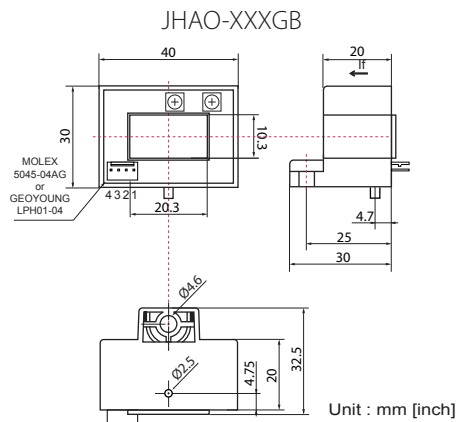
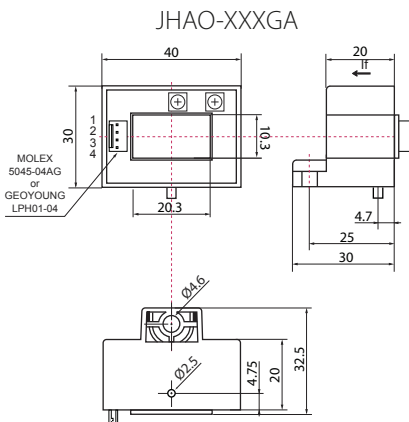
## >>> Specification

\* Suffix(X)=A/B

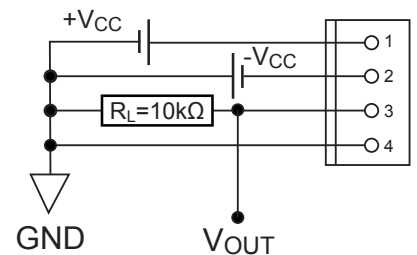
MODEL	JHAO-050G(X)	JHAO-075G(X)	JHAO-100G(X)	JHAO-150G(X)	JHAO-200G(X)	JHAO-300G(X)	JHAO-400G(X)	JHAO-500G(X)	JHAO-600G(X)	
Rating current	50A	75A	100A	150A	200A	300A	400A	500A	600A	
Saturation current	150AT	225AT	300AT	450AT	600AT	900AT				
Output voltage	±4 V, 1% at rated current RL=10KΩ									
Offset voltage	±30 mV max Less than	±15 mV max						±50 mV max		
Output linearity	±1% rated current									
Power supply	±15 V (±5%) 20mA									
Di/dt response time	3 μ sec (Typ.) at di/dt = F.S/μ Sec.									
Output temperature character	± 0.1% / °C (Typ.)									
Offset voltage temperature character	± 2mV/°C	± 1mV / °C (Typ.)								
Hysteresis error	30mV Less than 30mV	25mV(IF=F.S) Less than 25mV								
Insulation withstand voltage	AC 2500V / 1min.									
Insulation resistance	DC 500V / 500MΩ max									
Frequency bandwidth	20kHz									
Operating Condition	-15°C~+80°C									
Storage Condition	-15°C~+85°C									

## >>> Dimension

## >>> Connection



Unit : mm [inch]



Terminal Pin	1	2	3	4
Function	+ 15V	- 15V	Output	0V

Core=Silicon steel plate